

Design

People. Forms. Swisspearl.

SWISS
pearl®



04 – 09	Guhl
10 – 15	Trash Cube
16 – 19	Ecal
20 – 25	Dune
26 – 29	Mold Lamp
30 – 31	Porto
32 – 36	Sponeck

Special: St.Gallen School of Design

37 – 39	Die Bank
40 – 43	Tetris
44 – 45	Hocuspocus
46 – 49	Cheers
50 – 51	Birdy
52 – 53	Seater
54 – 61	Material
62 – 64	Processing

GUHL

In accordance with the spirit of the designer, the Guhl chair, which is regarded as an icon of Swiss style and after 70 years enjoys genuine cult status, is today still made by hand.

Elegance
In both
and function

**The Guhl table & chair.
Unpretentious. Inspired.**

If there is one item of furniture that possesses timelessness, then it is undoubtedly the chair from Willy Guhl. Whether in public areas, gardens or living rooms, it always represents a statement and an invitation to relax, reflect and contemplate. Moreover, for the viewer it constitutes an aesthetic gift and a very rarely achieved symbiosis of form and function.



nce.
h form
unction.

Guhl



Guhl chair / Design: Willy Guhl

Willy Guhl

BIOGRAPHY

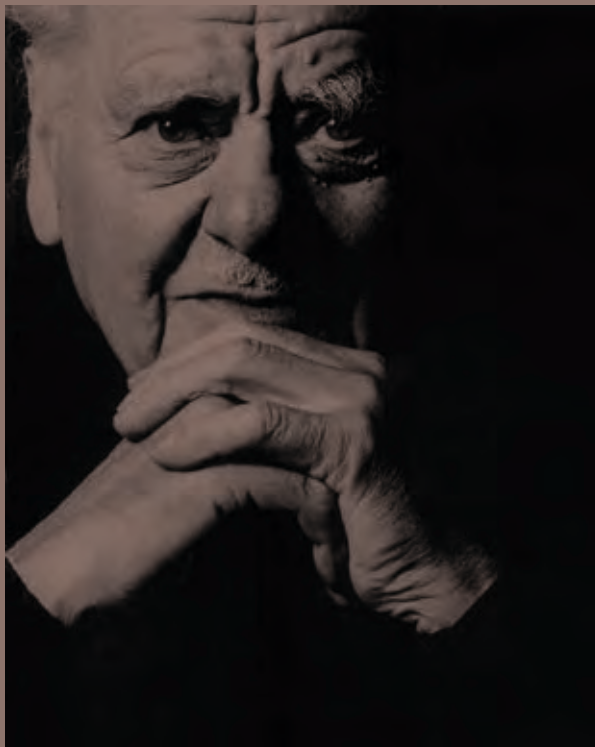
Born 1915 in Stein am Rhein, Switzerland
1930 – 1933 Apprenticeship as a cabinetmaker
in Schaffhausen, Switzerland
1934 – 1939 Interior design studies at the
Zurich School of Arts and Crafts (KGSZ)
1939 Own workshop
1941 Appointment as an interior design teacher at the KGSZ
1951 Invitation to take up an appointment at the State Academy
of Fine Arts in Stuttgart, Germany – Guhl turns down the offer
1951 - 1981 Head of the interior design course at the KGSZ
Died 2004

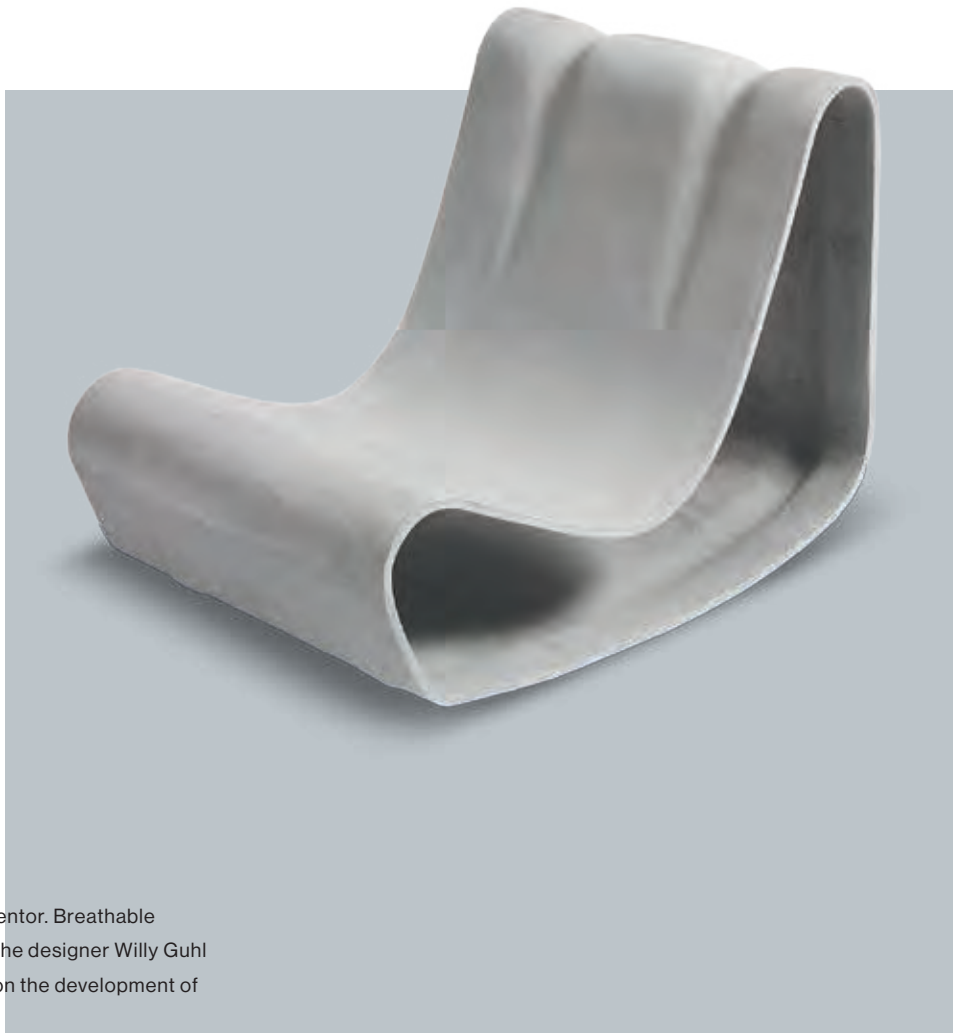
PROJECTS

Various projects as a teacher at the
Zurich School of Arts and Crafts (KGSZ)
G59 garden exhibition project with the KGSZ
Various objects with Swisspearl
Various objects in collaboration with the Dietiker table factory
From 1968, projects with the
Aebi agricultural machinery company
Various competitions and exhibitions
Co-founder of the VSI and SID
(Swiss Association of Industrial Designers)

HONORS

Receipt of the 1966 "Die gute Form" prize for the Rondo and
Excenter plant containers.





Fiber cement from the inventor. Breathable and moisture regulating. The designer Willy Guhl himself worked manually on the development of his outdoor seat.

Dimensions per element

Length	Width	Height	Weight
79 cm	54 cm	61 cm	23 kg



Guhl



Exclusive. A single fiber cement sheet is turned into a designer table in just one working procedure. The curvilinear form of the Guhl table matches that of the Guhl chair. Space-saving. Ergonomic. Weightless.

Dimensions per element

Length	Width	Height	Weight
72 cm	40 cm	22 cm	12 kg



Guh1

TRASH CUBE

Modern recycling.

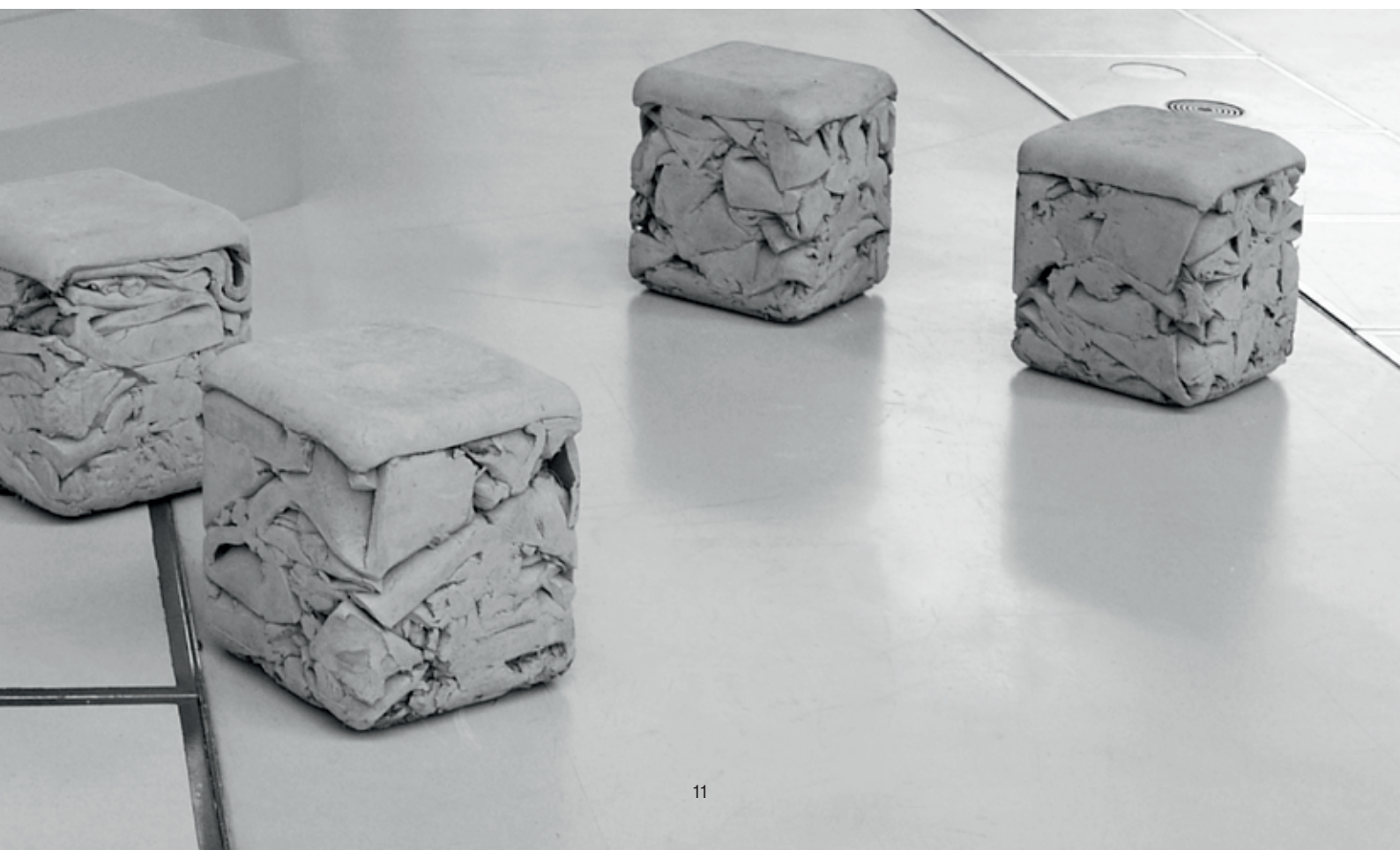
The Trash Cube emerged from the ingenious idea of a young designer to create a functional object, while lending scraps of fiber cement a surprising form.



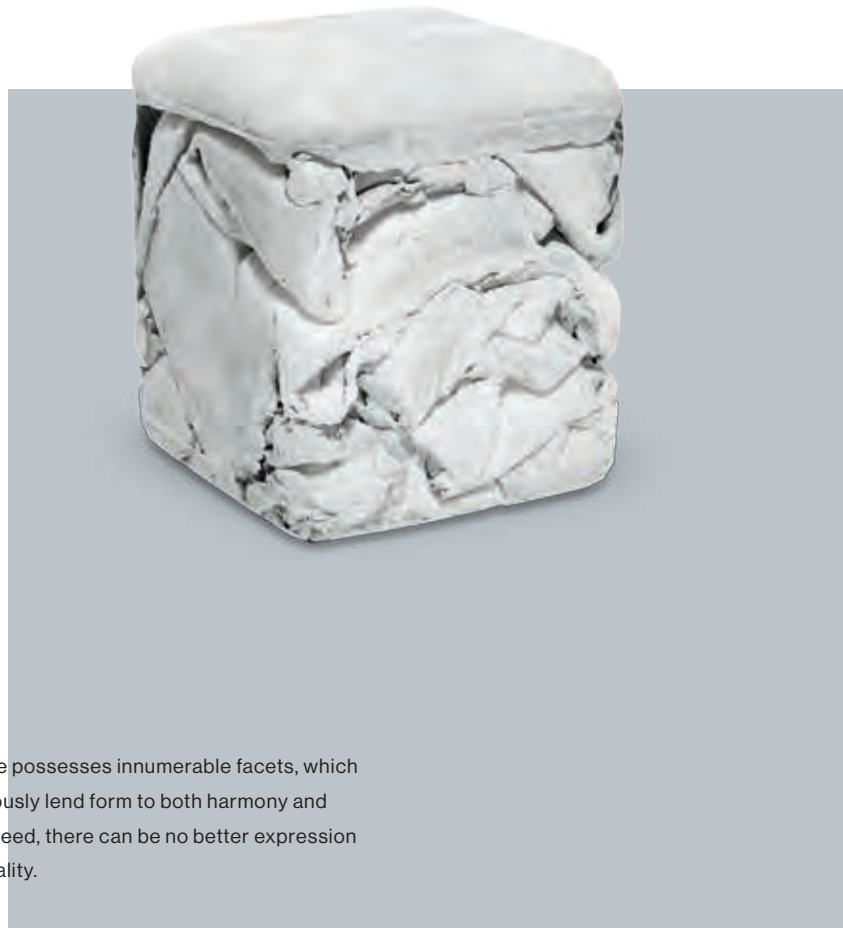
**Trash Cube.
Stool. Table. Sculpture.**

Modularity as a principle. Valuable snippets of fiber cement are given a new purpose. Spontaneous and unique cubes emanate from production waste and demonstrate textures and patterns that awaken our imagination and offer numerous possibilities for employment. Here, flower vases, coffee cups and the owners do battle for space.

Trash Cube



Statement. The inspiration of chance.



Trash Cube possesses innumerable facets, which simultaneously lend form to both harmony and variety. Indeed, there can be no better expression of individuality.

Dimensions per element

Length	Width	Height	Weight
31 cm	31 cm	36 cm	48 kg

Nicolas Le Moigne

BIOGRAPHY

Industrial designer, Ecole cantonale d'art de Lausanne (ECAL), 2001-2007

PROJECTS

Trash Cube (stool) for Swisspearl, 2011
Le Locle (table), Le Day (commode) and Meyrin (shelf) for Atelier Pfister, 2010
Slip stool for Gallery Libby Sellers, 2008
Ecal stool and table for Swisspearl, 2007
Verso Diverso, watering can for Viceversa, 2005
Public clock for the City of Geneva, 2004
Pot-au-Mur flowerpot for Serralunga, 2003

HONORS

Bourses Fondation Leenaards: winner, 2009
2008 Swiss Promotional Award for Design: winner
2008 Swiss Design Prize: nomination
2005 MACEF Design Award: winner





Trash Cube



The juxtaposition or arrangement in formation of numerous unique pieces creates a tableau that inspires the imagination, intuition and inventiveness.

In his work, the designer Nicolas Le Moigne unites sustainability with modernity. Everything down to the smallest morsel is lent purpose and employed. Cement, powdered limestone, fibers, air and water are all that fiber cement requires.



Trash Cube / Design: Nicolas Le Moigne





Trash Cube



ECAL

Elegant, modern,
durable. These are the
characteristics of the
table and chair set, which
with its functional design
vision establishes new
benchmarks in both the
in- and outdoor areas.

**Ecal table & stool.
Simplicity and singularity.**

Clarity and presence do not represent a contradiction in terms. Indeed, Ecal Design from Nicolas Le Moigne and the students of the Ecole cantonale d'art de Lausanne (ECAL) exudes a minimalistic elegance, which demonstrates that fiber cement and furniture go hand in glove. Moreover, the quality and resilience of this natural material are particularly evident in the outdoor area.



Ecal



Convincing efficiency personified. The Ecal stool is both a seat and an accessory, and according to taste can be used in either the vertical or the horizontal.

Dimensions per element

Length	Width	Height	Weight
42 cm	32 cm	42 cm	8 kg

Un
bu
no

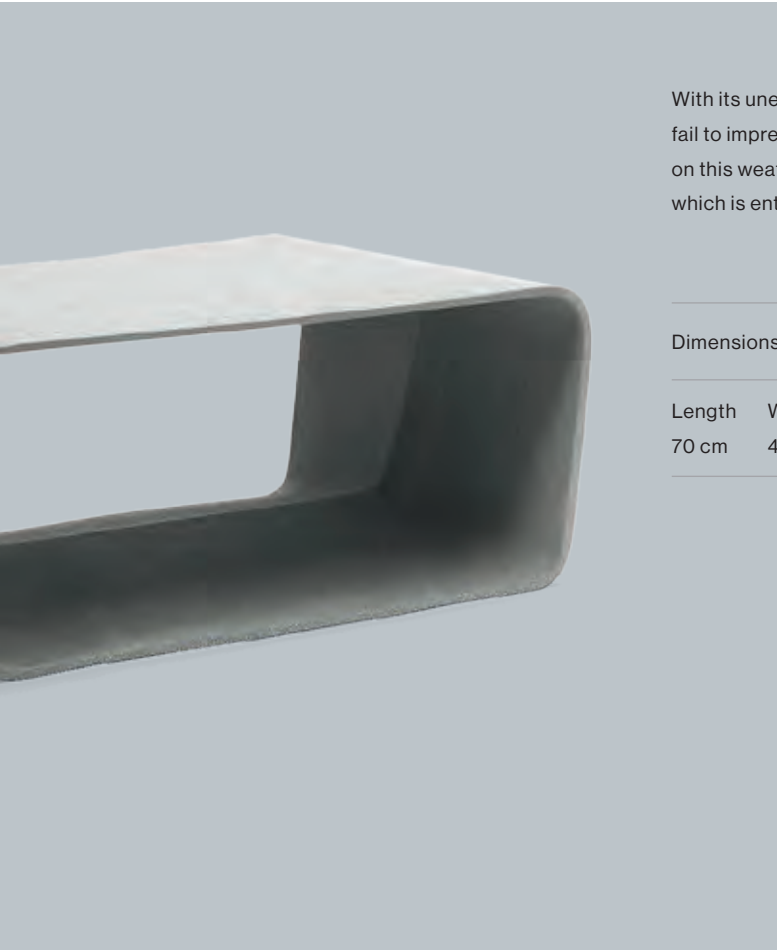


Ecal

Ecal stool / Design: ECAL

compromising,
t charming
netheless.





With its unembellished lines, the Ecal table cannot fail to impress. Books, food and drinks can all stand on this weather-resistant, stable item of furniture, which is entirely recyclable.

Dimensions per element

Length	Width	Height	Weight
70 cm	49 cm	27 cm	15 kg



DUNE

An outdoor furniture system based on a simple modular principle. The characteristics and malleability of fiber cement were pivotal factors in its creation.

Dune. Dimensions. Showplace.

A functional orientation with magical appeal. Dune, the furniture system created by Rainer Mutsch, has won many design awards and offers a wealth of applications. With its futuristic appearance and perfect form, this seating embodies unsurpassed interior beauty.



The shape alone speaks volumes. Indeed, Dune communicates best without any additional adornment. It is truly a jewel in itself and when the Dune Lounge is paired with a table, what more could one wish for?



Rainer Mutsch

BIOGRAPHY

Born 1977 in Eisenstadt, Austria
Design studies under Paolo Piva at the
University of Applied Arts Vienna
Furniture design studies at the
Danmarks Designskole, Copenhagen
Product design studies at the Berlin University of the Arts
Furniture-/interior design studies,
Higher Technical School, Mödling, Austria
Since 2007, own design office in Vienna

PROJECTS

Rocking chair (plastic) für Sixinch, Belgium
Outdoor collection für Viteo
Projects for Swarovski
Light installations on the Kärntnerstrasse in Vienna

HONORS

Various prizes and exhibitions in New York,
Tokyo, Paris and Milan, etc.
2009 Red Dot Design Award, winner
2010 Good Design Award
Shortlisted for the 2010 Brit Insurance Design Award



Modu Perfe Custo

The modular system offers a plethora of design possibilities and playfully kindles a new and multifaceted individuality.

Dimensions per element

Length	Width	Height
96 cm	95 cm	60 cm



Dune

ular.
ect.
omized.

Dune

In a venue lacking a defined structure or identity, Dune creates a striking social area for the public sphere. Manufactured in a single piece, it is perfect modulated to meet ergonomic requirements and generates space. Space for more design that excites, amazes and enchants.



Dune / Design: Rainer Mutsch

Awards: Red Dot Design 2009 / Good Design 2010 / Brit Insurance Design 2011 / Good Green Design 2011

Exhibitions: Tokyo Design Week / J London Design Museum / UK Beijing Design Biennale / CN Cheongiu Biennale / ROK



MOLD LAMP

Fiber cement in a completely new light. The intensive analysis of the material has resulted in unique objects, which enrich the living area both as sculptures and everyday items.

Mold Lamp.
Luminosity. Urbane living.

Perfect imperfection. Deliberately irregular structures engender the charm of the Mold Lamp. Function and singularity thus meet delight in a living space rendezvous.

Encou
Bathe

Mold Lamp



Mold Lamp / Design: Michel Charlot

unters.
d in light.



Brilliant. With the Mold Lamp, the designer Michel Charlot illustrates his interpretation of modern culture. The objects match any room and furnish a unique atmosphere.

Dimensions per element

Ø	Height	Weight
27 cm	32 cm	2,5 kg

Michel Charlot

BIOGRAPHY

Industrial design studies at the
Ecole cantonale d'art de Lausanne (ECAL)

PROJECTS

Protheses, exhibited at the «Tomorrow Now»
in Mudam Luxembourg
Mold Lamp, exhibited at the 2007 Design Miami/Basel
"Une lampe en verre", exhibited at the
2008 Design Miami/Basel

HONORS

Grand prix du jury, DESIGN PARADE 03, July 2008
2017 Swiss Design Award for the Porto table & stool
Swisspearl combination





Mold Lamp

PORTO

A comfort narrative.
With Porto, Michel
Charlot demonstrates
exceptional, optical
expressiveness
that culminates in
unconventional design
for individualists.

Contemporary product design employing a robust, durable material culture. Porto brings user-friendly shapes and skilled production into the living area.

Dimensions per element

Ø	Height	Weight	
71 cm	23 cm	17 kg	Porto table
46 cm	23 cm	24 kg	Porto side table
36 cm	42 cm	39 kg	Porto stool



Porto



SPONECK

Light and dynamic form in tandem with the solid longevity of the material transform this uncompromising design product into an object of remarkable aestheticism.



Sponeck table & chair / Design: Julia von Sponeck

Sponeck

Sponeck table & chair.
Where good looks collude with comfort.

This chair both looks and is comfortable because during its design, Julia von Sponeck placed a special focus on ensuring total bodily relaxation. The results are ergonomics for recuperation of a very personal nature and the wish to never again forego this sitting experience.

Futuris
Homog
Conne



The Sponeck table simply oozes charm. Hardly surprising, as anyone living in Paris does not merely design furniture, but also lifestyle. The table derives its stability from thin, interlaced Swisspearl sheets.



Dimensions per element

Length	Width	Height	Weight
50 cm	50 cm	25 cm	21 kg

Sponeck

tic.
genous.
cted.



Julia von Sponeck

BIOGRAPHY

From 1992 to 2000, Julia von Sponeck, (b. 1971) studied architecture and design at the Stuttgart Academy of Fine Arts in Germany and the University of North London, UK. For a number of years, she then worked as an architect and designer in offices of international repute. She has been living and working in Paris since 2005, where she is currently employed as an architect by Hermes International.

PROJECTS

Sponeck table & chair for Swisspearl





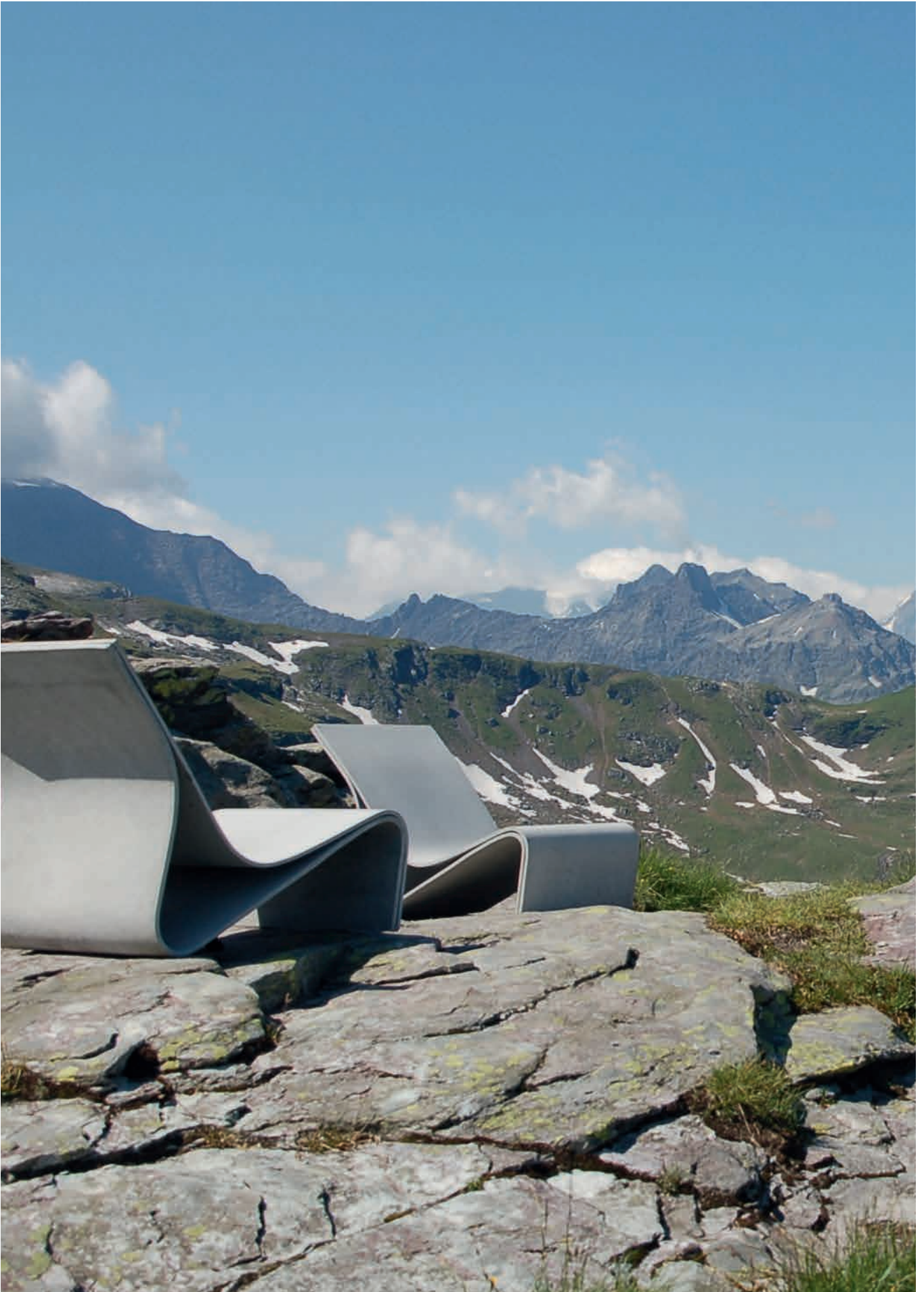
An invitation to take it easy. Reminiscent of the body shape, with its bright and hard-wearing cover, the chair enchants and provides colorful highlights both in and around the home.



Dimensions per element

Length	Width	Height	Weight
77,5 cm	50 cm	60 cm	28 kg







Special section

YOUNG EXPERIENCE

Swisspearl – in an interplay between know-how and youthful ideas.

The fiber cement manufacturer Swisspearl is open to projects with schools and universities of art that offer education in the design sector. It therefore repeatedly sponsors teamwork with students and young designers. For example, the Swisspearl works in Payerne, which can count leading designers among its partners, the most illustrious of whom was Willi Guhl with his Guhl chair designed in 1954, invited students from the St. Gallen School of Design to participate in a joint project.

Young Experience



“Owing to its malleability, for young people fiber cement represents a source of inspiration that offers a wealth of possibilities.”

Engin Cuskun, Product Manager Garden & Design

Fiber cement. Experience. Learn.

Product and Industrial Design Department of the St. Gallen School of Design



Young Experience



Outdoor lounge
Design: Catherine Rezzoli

The lounge can be used from both sides, one of which has a steeper angle for reading, while the other is flatter for leaning against.



“During our visit to the company in Payerne, I found the fact that Swisspearl can be joined simply by tapping particularly interesting. As a result, seams are barely visible and no screws or other fasteners are required. Consequently, the product appears to have no ends.”

Catherine Rezzoli

The young designers were able to work on the works' shop floor and thus shape their designs themselves.



The aim of the project with Swisspearl was to create a close practical link to work as a product designer. Therefore, a deliberate decision was made to offer the widest possible scope for ideas. Under the auspices of lecturer Andreas Bechtinger, sixteen design students created functional fiber cement products in a process that commenced with a visit to the Swisspearl works in Payerne, which gave the young designers an opportunity to become acquainted with the company's production methods. In the following six weeks, they then worked on product designs in the studio before returning to the Swisspearl plant with their blueprints in order to turn their ideas for objects into reality using their own hands.





Projects on the left-hand page

Bar & lounge seat
Christian Graf

ORIMO multifunctional bowl
Yannick Meyer-Wildhagen

DOGGO kennel
Wilko Nuber

RoboPort
Christian Wälti

Timber
Severin Kasper

Herb bar
Nina Schmitt

Bee INN bee hotel
Joël Lucien Thiévent

KYMA cycle rack
Jennifer West

Umbrella stand
Dominik Schai



Lecturer Andreas Bechtinger, the project head:

“The course at the St. Gallen school offers a practice-oriented training aimed at ensuring that the students reach an advanced level of industrial design competence. They then graduate with a higher school diploma in industrial design.”

The presentation at Swisspearl represented a highlight for the students, who had come up with genuinely exciting concepts.

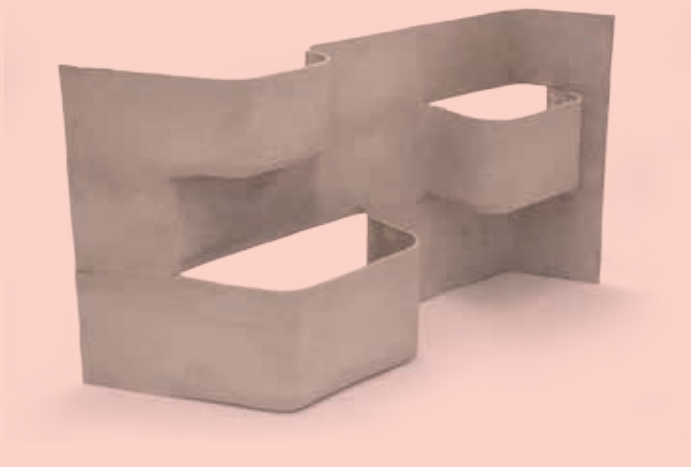


Young Experience



“It is
with
there

SWAVE screening and
space creating element
Design: Fabian Müller



“For me, the enthusiasm and motivation of the Swisspearl employees was an extremely positive surprise. It was also fascinating to see that Swisspearl is not an industrial product that emerges from a machine as a finished article, but rather a crafted material, which is shaped and processed by hand.”

Andreas Bechtinger

fascinating to work
a material for which
e is no equivalent.”



Herb garden shelf
Design: Christian Vettiger

The function of a modular
shelving system transferred
to a herb garden.



Young Experience



SANDro sandbox table
Design: Hanspeter Edelmann

A sandbox as a table, which is space saving and thus suitable for a balcony.



DIE BANK

Swiss industrial design at its finest. With carefully conceived concepts the designer broke through conventional thought patterns and surprises with new interpretations possessed of charm and style.



More than just a place to sit. Made from weather-proof fiber cement with smooth edges and capable of withstanding any wear and tear. This piece of furniture needs no name. It simply stands out by itself.

Dimensions per element

Length	Width	Height	Weight
160 cm	45 cm	46 cm	43 kg

Michel Bruggmann

BIOGRAPHY

1991-1996 Industrial design studies and diploma at the Gerrit Rietveld Academy, Amsterdam

1996 Studies at the Hokkaido

College of Art and Design, Sapporo

1997 Employment at Hahn & Suyling, Amsterdam

1999 Foundation of the EicherBruggmann, Basel

PROJECTS

For Swisspearl: Die Bank, Geisha, Kyoto, Osaka, Osaka 106, Samurai, Tokyo







TETRIS

A balanced interplay between technological, aesthetic and cultural factors. The combinations are endless and awaken a desire for playful rearrangement.



Tetris

**Tetris shelf system.
Modular. Practical. Stylish.**

Love at first sight. This multifaceted shelving immediately provides an inkling of its enormous potential. Strikingly exceptional, Tetris captivates the viewer and then serves as a splendid partner in every regard. Stacked in rows and piles, colorful books and shoes, not to mention objets d'art and much more besides, are all to be seen.

Figure
Cult
Art o

Tetris



Tetris shelf system / Design: Fries & Zumbühl

re.
ure.
object.

Fries & Zumbühl

BIOGRAPHY

Kevin Fries

1977 Born in Zürich

2003 Swiss higher school design diploma,
with a focus on industrial design

2003 Foundation of fries & zumbühl

Jakob Zumbühl

1978 Born in Zürich

2003 Swiss higher school design diploma,
with a focus on industrial design

2003 Foundation of fries & zumbühl

PROJECTS

Darling bed

Tetris shelving system

Crochet clothing pegs

Wald-Haus light family

Pachific lounge

HONORS

2009 Red Dot Design Award and IF Award for Tetris

2009 design prize nomination for Darling,

IF Gold Award, Red Dot Design Award, Switzerland

2009 Red Dot Design Award for Wald-Haus

2009 IF Award for Crochet

2009 Young Professionals Award for Captain Hook clothing pegs

2007 Young Professionals Award for Tschoc

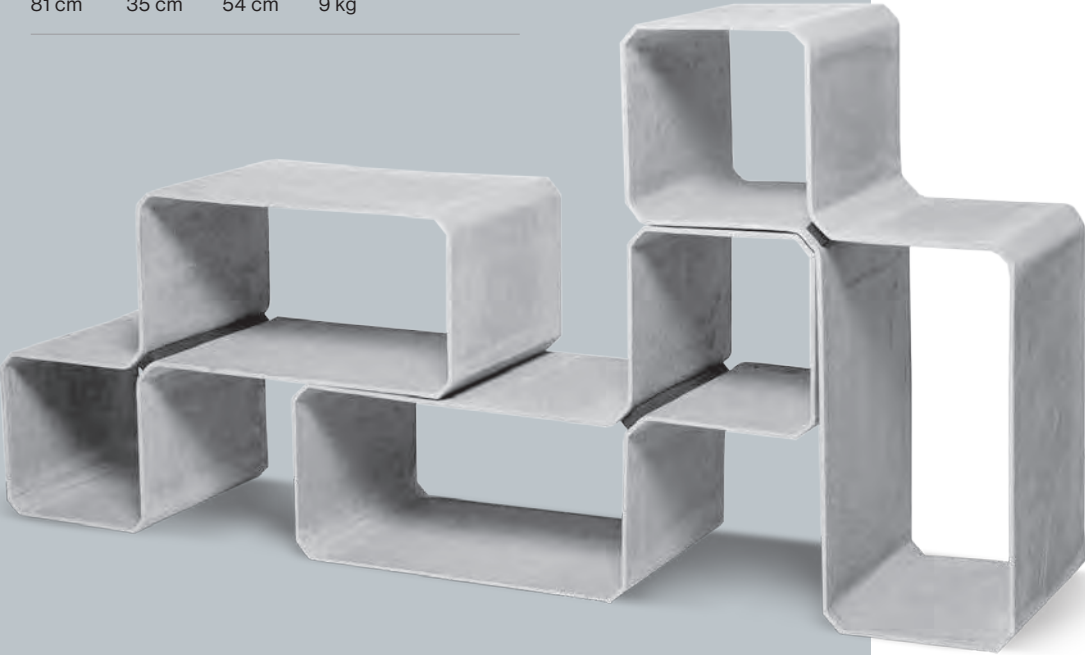
2006 "Die Besten" nomination for Pachific



With its beauty of form and the innovative simplicity of its design, Tetris offers captivating and contemporary interior design.

Dimensions per element

Length	Width	Height	Weight
81 cm	35 cm	54 cm	9 kg



Tetris





HOCUSPOCUS

Appears to be magic, but is actually Swisspearl. Tough and hard wearing, as a side table or a delightful shelf. Also suitable for use outdoors and in color personifies unsurpassed visionary thinking.



Hocuspocus / Design: Fries & Zumbühl

Hocuspocus

A Swisspearl mat is lent shape and thus becomes a genuine eye-catcher. Hocuspocus does not require a frame because the solidified material is self-supporting. Kevin Fries and Jakob Zumbühl created this spellbinding table by hand.

Dimensions per element

Ø	Height	Weight
45 cm	43 cm	8 kg
58 cm	36 cm	8 kg



CHEERS

Practicality lent center stage by an architectural material. The Swiss designers from Thingdesign crafted fiber cement into this modular shelving in the course of an introspective process.

Solid Stack Prac

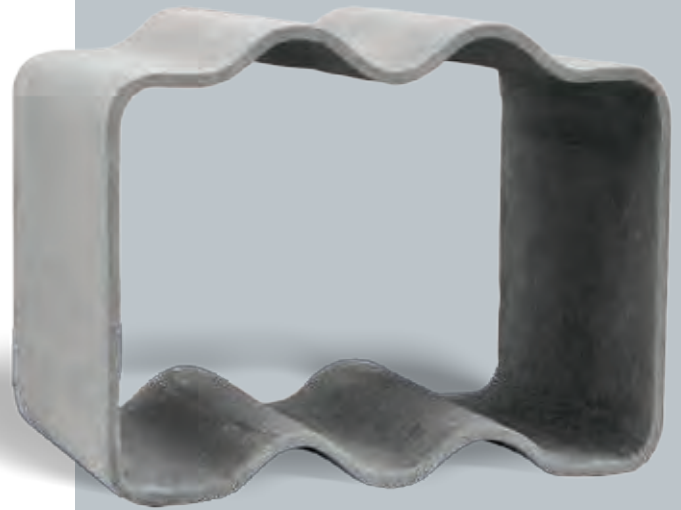


Cheers



d.
ckable.
etical.

Cheers



Thingdesign

BIOGRAPHY

Cédric Facchin - higher school design diploma

Marco Di Paolo - higher school interior design diploma

Michael Abegg – structural draughtsman / cabinetmaker

PROJECTS

Redesign “Profiline Outdoor Kitchen” for Electrolux, 2012

“Cheers” wine shelving for Swisspearl, 2012

“Mono-Lite” washstand for Antonio Lupi, 2010

“Compactus” future living concept, 2007

HONORS

2010 Antonio Lupi Dressed Stone Design Contest

2008 SIGG “Swiss Designers Wanted” Design Contest

2007 Kaspar Diener promotional award



This multifunctional system meets the aesthetic demands of the living area. Unobtrusive, stackable design elements, which with their wave-like form offer a reminder of the characteristics of Swisspearl.

Dimensions per element

Length	Width	Height	Weight
38 cm	25 cm	31 cm	4,6 kg



Cheers / Design: Thingdesign

Cheers



Cheers. **More than just wine shelving.**

Irrespective of whether it be firewood, books, wine bottles or towels, Cheers is always prepared to receive. Moreover, apart from lounges, this shelving creates space for small items in bathrooms, kitchens and toilets. Cheers derives its stable shape from an integrated fabric mat. Ready for almost anything, this designer shelving creates a assured flair for simultaneous tidiness and idiosyncrasy.

BIRDY

The pleasure of finding a new home attracts many winged visitors. An accessible opening and a cozy interior await. Or, in other words, an ideal nesting place for small, feathered friends.

Vladimir Jaccard

BIOGRAPHY

Studies as an industrial designer at the
Ecole cantonal d'art de Lausanne (ECAL)
Co-founder of the JALE-Design office
in the Lausanne region, Switzerland

PROJECTS

Work for the Swiss Watch Company in the
instrument and time measurement areas
"Birdy" nesting box for Swisspearl





Birdy. The designer Vladimir Jaccard employed breathable and moisture regulating fiber cement for this practical and attractive nesting box. The two interlocking shells can be easily lifted apart for cleaning purposes. Safely protected against frost, small birds thus have a tranquil nesting spot for the care of their young.

Dimensions per element

Length	Width	Height	Weight
21 cm	16 cm	22 cm	1,2 kg



SEATER

Elegant lines and practicality for the garden. Seater is an item of furniture with a solid structure that nonetheless appears remarkably slim. The strength and resilience of fiber cement is thus once again apparent.

Tina Rugelj

BIOGRAPHY

Studies at the Architectural Faculty of Ljubljana University
Graduation from Graz University of Technology in 2002
A one-year design course at the Centre Universitari de
Disseny i Art de Barcelona (UAB/EINA)
Teamwork with architectural offices in Slovenia
Foundation of an own design studio in 2011

PROJECTS

“Concrete Garden” garden furniture collection, 2012



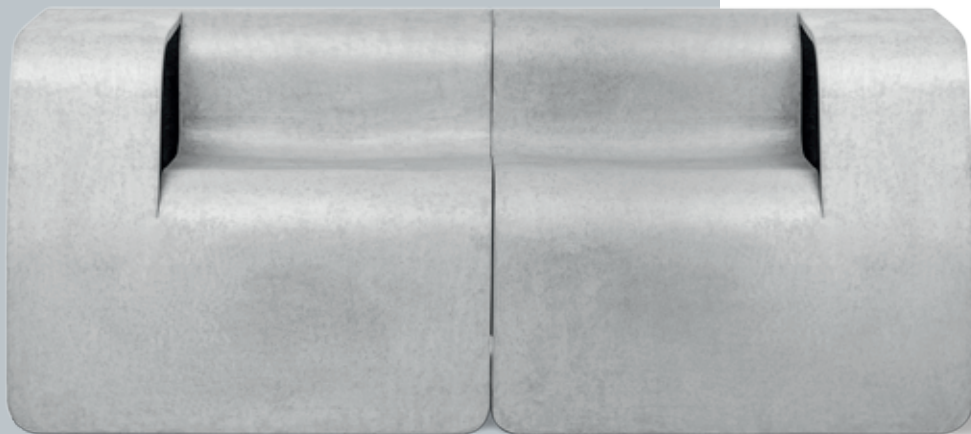


Tina Rugelj is the designer of this unpretentious seating, which offers practical details. One can sit comfortably, put a coffee cup or glass of water aside, read, relax, or simply savor nature... Moreover, when company is desired, one Seater simply melts into another.

Seater

Dimensions per element

Length	Width	Height	Weight
80 cm	70 cm	63 cm	37 kg



THE FIBER CEMENT MATERIAL

Swisspearl – sustainability and durability in every fiber.

Light and unbreakable, water-impermeable, long lasting, frost and fire-resistant, not to mention entirely recyclable. In a nutshell, fiber cement from Swisspearl. Natural, regional raw materials guarantee short transport distances and the material's qualitative characteristics not only include a strongly pronounced innovative spirit, but also resource protection and pollutant minimization.



Material

51% Portland-cement

Material



30% Air

Air. Resilience derived
from an interplay with
natural raw materials.



12% Water



5% Cellulose

The world's thinnest cement sheet. The material of culture.

The composition

Swisspearl consists of 51% cement, 30% air, 12% water, 5% cellulose and 2% reinforcement fibers. Elements that are transformed into unique fiber cement products by means of expertise, precision and craftsmanship. However, only when the material fulfills the strictest demands in every regard does it earn its name, Swisspearl.



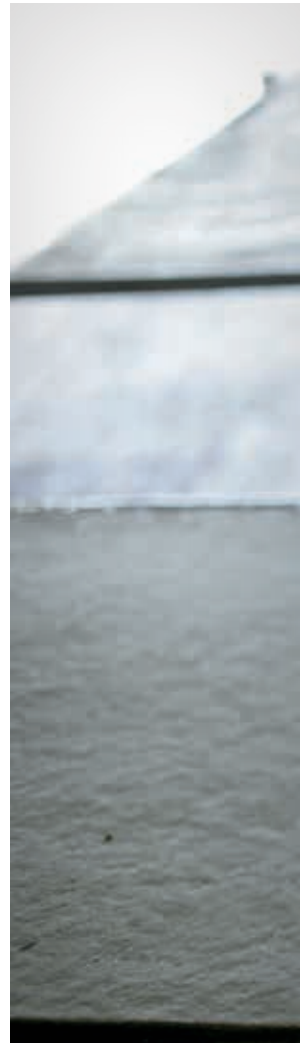
Material

2% Reinforcement fibers



Processing

SWISSPEARL PROCESSING





Individual. Handmade. Swisspearl material processing.

Made by hand. Cut to length, hammered, smoothed and spread. The raw material is crafted manually and shaped with great sensitivity until highly expressive and durable masterpieces emerge. Each of which constitutes a one-off in its own idiosyncratic right and bears the personal signature of the designer.







façades

A division of Halifax Vogel Group Pty Ltd

Ph: 1300 881 712

sales@hvgfacades.com.au

www.hvgfacades.com.au

SWISS
pearl®

Swisspearl
CH-8867 Niederurnen
+41 55 617 11 60
info@swisspearl.com

www.swisspearl.com

Member of the
Swisspearl Group

